

Joshua's Creek Arena protocols explained

RED zone - Nov 26th:
Enter 10min before!
10 on the ice!
No spectators!
No change rooms!

- ❑ Always observe the basics
 - ❑ Physical distancing – a hockey stick length apart at all times off the ice, **3m distance on the ice**
 - ❑ Mask wearing – at all times when not on the ice for hockey participants
 - ❑ Hand washing – with soap, especially after touching your face

❑ Joshua's Creek Arena specific protocols

- ❑ **The provincial arena on-ice participant limit is currently 10 (players, coaches and trainers). There are NO spectators allowed. Change rooms are not available.**

These limits include hockey participants, team staff and arena personnel and help us stay safe

- S** ❑ **Strict** separation of the red and blue rinks as well as of hockey participants (on the arena level).
- A** ❑ **Adherence to time limits (10min) before and after (10min) your ice time**
- F** ❑ **Flow** – unidirectional traffic in the rinks – enter in the front, exit at the back
- E** ❑ **Empathy** – remember that arena staff are there to remind us when we do not follow the rules meant to protect all of us
- ❑ Please find more detail / examples for the time limits / traffic flow on the next pages
- ❑ Current Town of Oakville protocols can always be found in our Health Service library: https://oakvillehornets.com/Libraries/2956/Health_Services/



Ice time example - lobby staging

**RED zone - Nov 26th:
Enter 10min before!
10 on the ice!
No spectators!
No change rooms!**

- Your ice time in this example is listed on the web / ice map and in TeamSnap as 5-6pm
 - Note: The actual ice time – as in previous seasons – is 5-5:50pm to allow for a flood



▪ Hockey participants

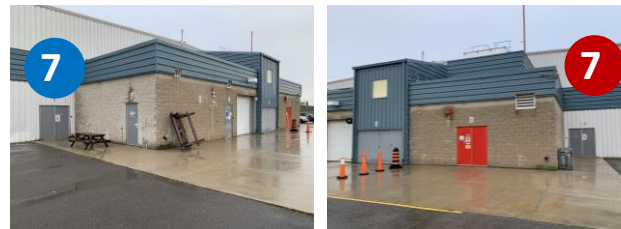
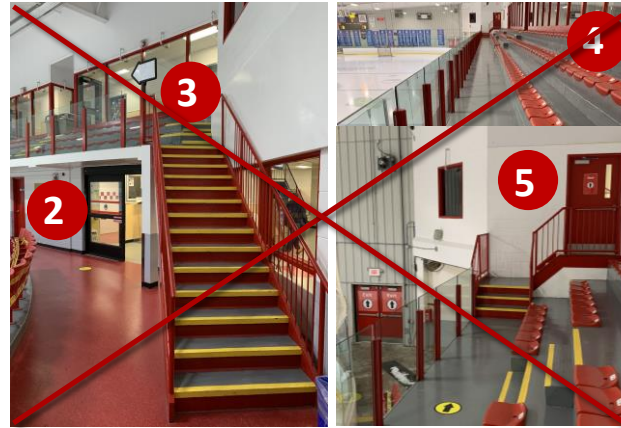
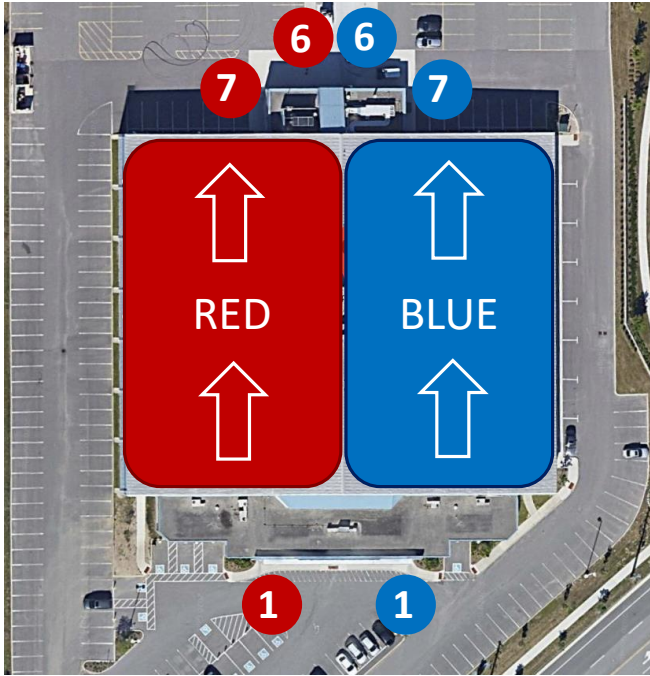
- Enter the lobby at 4:50pm **through the front door** for their rink (red or blue, no cross-over!)
Please note: Hockey participants take off skate guards / put on skates in the lobby on provided chairs.
- Enter the rink at 5pm and step on the ice. Do NOT enter until the previous team has left out the back door.
Please note: skate guards / bags can be left in the hallway in the arena on the concrete riser (do not block the hallway!) before stepping on the ice.
- Leave the ice promptly at 5:50pm, **put on skate guards / change into shoes** and leave the rink **through the back door** latest at 6pm.

▪ Spectators

- **There are NO spectators allowed while we are in the RED zone.**



Red and blue rink separation explained



- 1** Red rink entrance for hockey participants and spectators.
- 2** Hockey participants proceed to lobby on arena level and enter rink fully dressed.
- 3** Spectators proceed to stands.
- 4** Spectators physically distance in the stands.
- 5** Spectators exit from stands through far door.
- 6** Spectators exit rink at the back.
- 7** Hockey participants exit rink at the back.
- 1** Blue rink entrance for hockey participants and spectators.
- 2** Steps 2 through 5 not shown for blue rink.
- 6** Spectators exit rink at the back.
- 7** Hockey participants exit rink at the back.

- Please observe the strict separation between the red and blue rinks.
- Please enter in the front and exit out the back.
- Please maintain physical distancing at all times.

Important notes

RED zone - Nov 26th:
Enter 10min before!
10 on the ice!
No spectators!
No change rooms!

- ❑ YES, entering in the front and leaving out the back unfortunately means that you may want to move your car to the back before entering.
YES, that means walking around the rink to the front before you enter.
NO, "just quickly" stepping out the front at the end of the ice time to move your car is not acceptable to avoid crossing over with subsequent groups. The only exception to this is parents of U11 and younger players helping to tie skates in the lobby – they may exit out the front.
- ❑ YES, waiting in your car out back is perfectly fine. Please observe the Town of Oakville anti-idling by-law.
NO, congregating in groups without physical distancing is not acceptable.
NO, tailgating, especially with alcohol is never acceptable at rinks or town parking lots.
- ❑ YES, we ask that players enter the arena mostly dressed.
Skaters are expected to put on their skates in the lobby by themselves. Goalies may dress in the lobby only if they can do so within 10min. The 10min time after coming off the ice needs to be observed strictly to avoid conflicts with the next team stepping on the ice.
YES, exceptions will be made for dressing U11 (and younger) players. One caregiver per player may help tie skates inside the lobby in such circumstances within the 10min limit while observing physical distancing and occupancy limits. Caregivers MUST exit immediately after helping their player tie their skates.
- ❑ NO, use of town parking lots for unapproved purposes is NOT ACCEPTABLE (e.g. team warm-ups, pizza parties, team meetings, tailgating, meat order pick-ups, etc).

